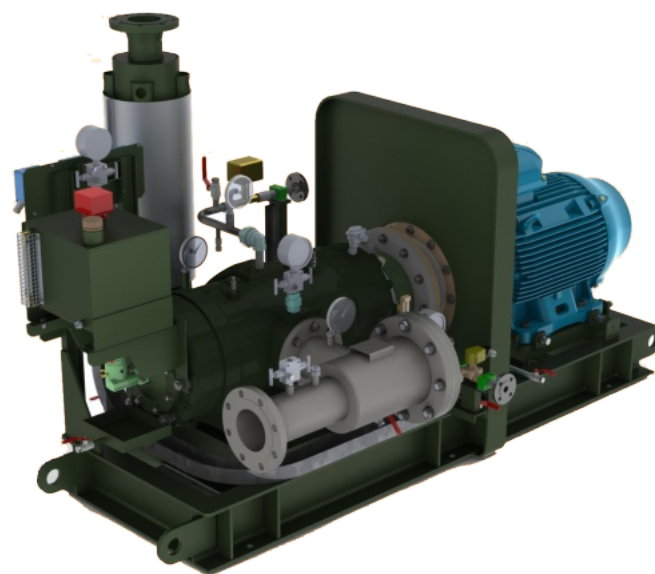


### Design:

- / Cast iron cylinder with/without surface treatment (application dependent), simple casing for air-cooled machines and double casing for liquid-cooled machines
- / Bare shaft or skidded
- / One-piece steel forged steel/stainless steel rotor
- / Vanes are manufactured from high-strength composite materials (phenolic resin and aramide fibers) or from specific polymer
- / Roller bearings, ball bearings, double taper roller bearing, depending on the application
- / Single or double mechanical seal
- / API Coupling
- / Proprietary micro-lubrication system: oil pump driven by compressor shaft or by independent electric motor (Minilub). Monitoring as an option
- / Check valve on discharge
- / Suction and discharge manometer
- / Inlet /outlet filter (strainer or ceramic plug type)
- / Factory test with test report
- / Long conservation packing with nitrogen insulation
- / Engineering and documentation
- / Automation



### Performances:

- / Flow : up to 6 000 m<sup>3</sup>/h
- / Pressure : up to 10<sup>-4</sup> mbar abs

### Standard materials:

- / Cast iron or nodular cast iron casing
- / Steel rotor
- / Other materials according to the customer's technical requirements

### Industrial applications:

- / General vacuum
- / Coalmine gas from closed pits
- / Large test facilities, large flow pumps (space industry simulation tests)
- / Power station condensers
- / Metal surface treatment / vacuum coating
- / Process vacuum in chemical and nuclear industries
- / Vacuum drying
- / Vacuum extrusion and injection processes